



The content of this brochure must remain confidential until the embargo date is made effective on September 8th at 11:00 CET.

V. 3 Distr.



22YM MONTESA MOTORCYCLE LINE-UP



Toni Bou (28 times World Trial Champion) riding the 22YM
Montesa Cota 4RT 301RR Race Replica



INDEX:

1) 22YM MONTESA LINE-UP

1.1) 22YM MTOC

2) MONTESA COTA 4RT 260R

2.1) MRT260N (ED) vs (3ED)

2.2) INFO. MRT260N (ED/3ED)

Montesa Cota 4RT 260R

2.3) Description Specs. 22YM MRT260N (ED/3ED)

3) MONTESA COTA 4RT 301RR

3.1) MRT301N (ED) vs (3ED)

3.2) INFO. MRT301N (ED/3ED)

Montesa Cota 4RT 301RR

3.3) Description Specs. 22YM MRT301N (ED/3ED)

4) MONTESA COTA 4RT 301RR RACE REPLIC

4.1) MRT301N (2ED) vs (4ED)

4.2) INFO. MRT301N (2ED/4ED)

Montesa Cota 4RT 301RR Race Replica

4.3) Description Specs. 22YM MRT301N (2ED/4ED)

5) MONTESA 4RIDE

5.1) INFO. MST260N (ED)

Montesa Cota 4RIDE

5.2) Description Specs. 22YM MST260N (ED)



1) 22YM MONTESA LINE-UP

NEW MODEL



Montesa Cota 4RT 260R
MTOC: MRT260N (3ED/4ED)
“Latest evolution of the 4RT 260 Montesa trials bike.”

UPGRADED VERSION



Montesa Cota 4RT 301RR
MTOC: MRT301N (ED/3ED)
“The ultimate Montesa Cota.”

NEW VERSION



**Montesa Cota 4RT 301RR
RACE REPLICA**
MTOC: MRT301N (2ED/4ED)
“Our most race-focused trials Montesa motorcycle.”

EURO 5 COMPLIANT



Montesa Cota 4RIDE
MTOC: MST260N (ED)
“The Montesa which reinvented the off-road experience.”



1) 22YM MONTESA LINE-UP



UPGRADED VERSION

MRT301N (3ED)

NEW MODEL

MRT260N (3ED)

NEW VERSION

MRT301N (4ED)



EURO 5 COMPLIANT

MST260N (ED)



1.1) 22YM MTOC

MTOC	COLOUR CODE	COLOUR DESCRIPTION	MODEL DESCRIPTION
MRT260N ED	NH1	Black	Montesa Cota 4rt 260R Street Version
MRT260N 3ED	NH1	Black	Montesa Cota 4rt 260R Race Version
MRT301N ED	MH229MU	Anchor Gray Metallic	Montesa Cota 4rt 301rr Street Version
MRT301N 2ED	NH196	Ross White	Montesa Cota 4rt 301rr Race Replica Street Version
MRT301N 3ED	NH229MU	Anchor Gray Metallic	Montesa Cota 4rt 301rr Race Version
MRT301N 4ED	NH196	Ross White	Montesa Cota 4rt 301rr Race Replica Race Version
MST260N ED	NH196	Ross White	Montesa 4RIDE 2022

*Note that, MTOC's for Cota 4RT 301RR models are now MRT301N for 22YM (instead of MRT300L for 21YM)



2) MONTESA COTA 4RT 260R

- Introduction of new graphic design in **Black** colour (ref. NH-1) in combination with white/red highlights.



COTA
4RT 260R



2) MONTESA COTA 4RT 260R

20YM



MRT260L (ED/3ED)



MRT260L (2ED/4ED)

22YM

NEW MODEL



MRT260N (ED/3ED)

4RT
260R



2.1) MRT260N (ED) vs (3ED)

MRT260N (ED)

***STREET VERSION.**



MRT260N (3ED)

***RACE VERSION. FOR COMPETITION USE ONLY. OPTIONAL PARTS KIT SHOWN.**





2.2) INFO. MRT260N (ED/3ED)

Montesa Cota 4RT 260R



4RT
260R

Description:

- The Cota 4RT 260 keeps developing, and now climbs up a step further by acquiring the "R" specification. This revised model, **now incorporates higher quality components** like for instance a **SHOWA rear Pro-Link damping system** and the **enlarged exhaust from sister model 301RR**. This motorcycle is the logical evolution of the 4RT 260 Montesa.

Main motorcycle features:

- New graphic design
- 260cc four-stroke Honda engine
- SHOWA front/rear suspension
- 301RR exhaust
- Dunlop tyres
- Black finished Brake/Gear foot levers from 301RR

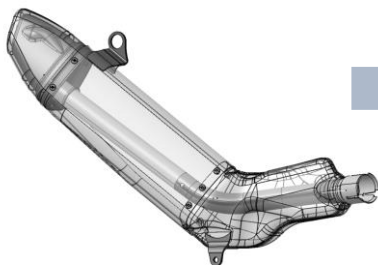
Engine	
Bore × Stroke (mm)	78 x 54.2
Carburation	Electronic fuel injection PGM-FI
Compression Ratio	10.5 : 1
Engine Displacement (cc)	258.9
Engine Type	Single, 4-strokes, 4 valves, SOHC, liquid cooled
Starter	Kick starter
Wheels	
Brakes Front	185 × 3.0 mm hydraulic disc with 4-piston caliper and sintered metal pads
Brakes Rear	150 × 3.0 mm hydraulic disc with 2-piston caliper and sintered metal pads
Suspension Front	39 mm SHOWA telescopic fork with pre-load, rebound and compression adjustment. 158mm stroke
Suspension Rear	Pro-Link system with SHOWA shock with spring pre-load and rebound adjustment. 170mm stroke
Tyres Front	Front 80/100 21 (Dunlop)
Tyres Rear	Rear 120/100 R18 (Dunlop)
Wheels Front	Aluminium rims/ wire spokes
Wheels Rear	Aluminium rims/ wire spokes
Dimensions and Weights	
Caster Angle	23°
Dimensions (LxWxH) (mm)	2,020 × 840 × 1,135 mm
Frame type	Diamond, aluminium twin spar
Fuel Tank Capacity (Litres)	1.8 litres
Ground Clearance (mm)	335 mm
Seat Height (mm)	650 mm
Trail (mm)	63 mm
Wheelbase (mm)	1,320 mm
Transmission	
Clutch	Wet, multiplate with coil springs
Final Drive	Roller chain
Transmission Type	5-speed
Instruments and Electrics	
Ignition System	Electronic, digital transistor



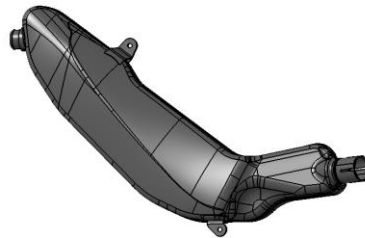
2.2) INFO. MRT260N (ED/3ED) *Montesa Cota 4RT 260R*

Performance increase in 22YM MRT260N from addition of aluminium enlarged exhaust:

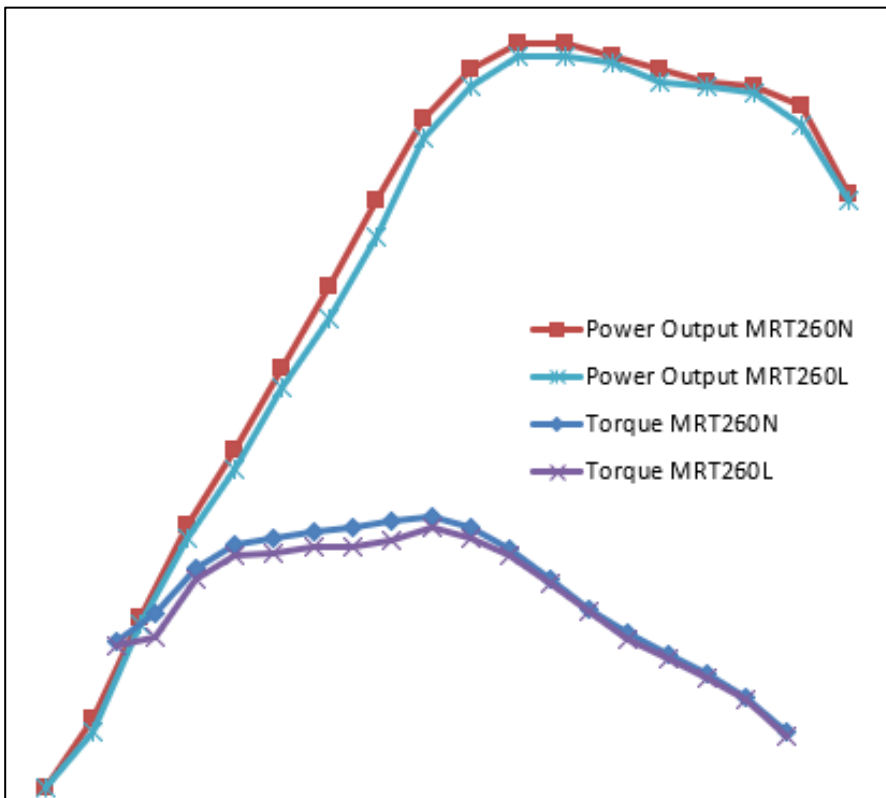
- Below we can see a chart with four plot lines for both torque and power output. The chart emphasizes the performance differences between the two 260cc engine models (21YM vs 22YM) along the most used engine rpm range for trials riders. This is a visual way to understand that with the addition of the new exhaust specification we achieve a higher performance both in terms of max power (kW) and torque (Nm) up to 5%.



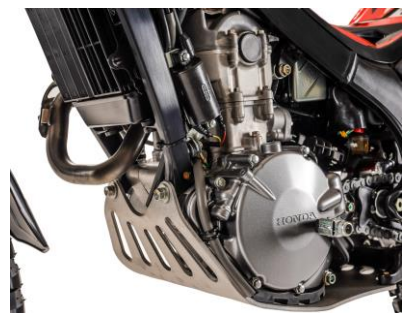
20YM Exhaust, MRT260L
(ED/2ED/3ED/4ED)



22YM Exhaust, MRT260N
(ED/3ED)



*MRT260N (ED/3ED) Exhaust



*MRT260N (ED/3ED) Engine



2.3) Description Specs. 22YM MRT260N (ED/3ED)

1) Decoration
description:

22YM

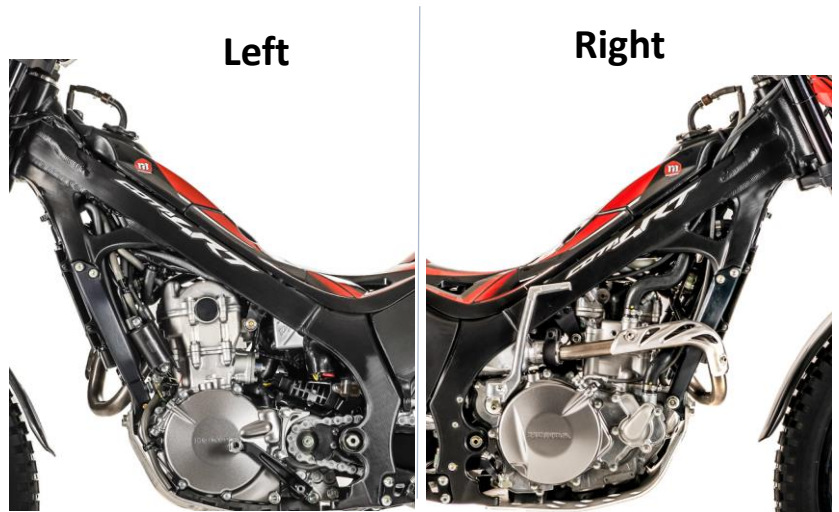
1.1 Front Fender
(new graphic
design)



1.2 Rear Fender
(new graphic
design)



1.3 Chassis (new
graphic design in
black anodized
finish)



1.4 LED light /
Headlight cover
(Red design).
(Optional Parts
Kit, no carbon
parts included)
(3ED)





2.3) Description Specs. 22YM MRT260N (ED/3ED)

1) Decoration
description:

22YM

1.5 Wheels in
black finish
(stickers new
graphic design)

Rear



Front



1.6 Frame protector
stickers (same
rough finish from
sister models for
durability)

Left



Right



1.7 Top bridge/stem
(black colour)



1.8 Fuel tank (black
anodized colour finish
and new graphic
design)





2.3) Description Specs. 22YM MRT260N (ED/3ED)

1) Decoration description:

22YM

1.9 Engine cases
for 260cc engine
in silver finish.

Left



Right



1.10 Exhaust
protector (3ED)



1.11 Exhaust
cover (black
finished)



1.12 S3 Foot pegs
(black)





2.3) Description Specs. 22YM MRT260N (ED/3ED)

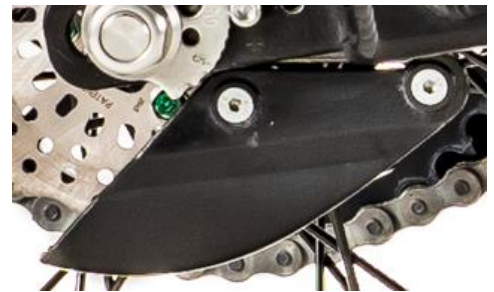
1) Decoration description:

22YM

1.13 S3 rear
sprocket (41T),
black colour
finish



1.14 Black colour
rear sprocket &
rear disk
protectors



1.15 S3 Chain
rubber tensor
(black)



1.16 Front disk
protector (black
finish)





2.3) Description Specs. 22YM MRT260N (ED/3ED)

1) Decoration
description:

22YM

1.17 S3 Grips



1.18 Clutch/front
brake pump set



1.19 Brake/gear
lever black
finished colour



1.20 S3 black
finished
handlebar &
protector design





2.3) Description Specs. 22YM MRT260N (ED/3ED)

2) Performance
description:

22YM

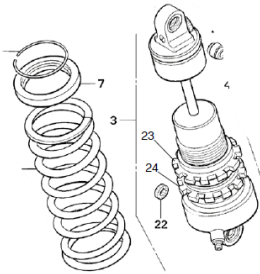
2.1 Rear FIM
approved disk
brake

GALFER



2.2 Front & Rear
SHOWA suspension

SHOWA



2.3 Enlarged
lightweight
construction
aluminium exhaust





3) MONTESA COTA 4RT 301RR

- Introduction of new graphic design in **Anchor Gray Metallic** colour (ref. NH229MU) in combination with black/red/white highlights.



COTA
301RR



3) MONTESA COTA 4RT 301RR

20YM



MRT30M (2ED/4ED)

22YM

UPGRADED VERSION



MRT301N (ED/3ED)

**COTA
301RR**

22YM

NEW VERSION



MRT301N (2ED/4ED)

**COTA
301RR
RACE REPLIC**



3.1) MRT301N (ED) vs (3ED)

MRT301N (ED)

*HOMOLOGATED VERSION



MRT301N (3ED)

*RACE VERSION. FOR COMPETITION USE ONLY. OPTIONAL PARTS KIT SHOWN.





3.2) INFO. MRT301N (ED/3ED) Montesa Cota 4RT 301RR



COTA
301RR

Description:

- The Cota 301RR is our **competition-oriented machine** created for the brand's most demanding Montesa riders. It delivers instant performance thanks to its 298cc 4-stroke Honda engine. Heir to the TR2 World Championship motorbike, it incorporates a specific ECU map that improves its engine response.

Main motorcycle features:

- New graphic design
- 300cc four-stroke Honda engine
- 39mm SHOWA telescopic fork with pre-load, rebound and compression adjustment.
- Pro-Link system with SHOWA shock with spring pre-load and rebound adjustment.

Engine	
Bore x Stroke (mm)	81.5 x 57.2 mm
Carburation	Electronic fuel injection PGM-FI
Compression Ratio	10.4 : 1
Engine Displacement (cc)	298cc
Engine Type	Single, 4-strokes, 4 valves, SOHC, liquid cooled
Starter	Kick starter
Throttle Bore	28mm
Oil Capacity (Litres)	Engine 0.6L, Transmission 0.57L
Wheels	
Brakes Front	185 x 3mm hydraulic disc with 4-piston caliper and sintered metal pads
Brakes Rear	150 x 3mm hydraulic disc with 2-piston caliper and sintered metal pads
Suspension Front	39mm SHOWA telescopic fork with pre-load, rebound and compression adjustment. 158mm stroke.
Suspension Rear	Pro-Link system with SHOWA shock with spring pre-load and rebound adjustment. 170mm stroke
Tyres Front	Front 2.75 - 21 (Michelin)
Tyres Rear	Rear 4.00 - R18 (Michelin)
Wheels Front	Aluminium rims/ wire spokes
Wheels Rear	Aluminium rims/ wire spokes
Dimensions and Weights	
Caster Angle	24.5°
Dimensions (LxWxH) (mm)	2020 x 840 x 1135 mm
Frame type	Diamond, aluminium twin spar
Ground Clearance (mm)	310mm
Kerb Weight (kg)	73kg
Seat Height (mm)	677mm
Trail (mm)	63mm
Wheelbase (mm)	1,320mm
Transmission	
Clutch	Wet, multiplate with coil springs
Clutch Operation	Hydraulic
Final Drive	Roller chain
Gearbox	5-speed
Transmission Type	Manual
Instruments and Electrics	
Ignition System	Electronic, digital transistor



3.3) Description Specs. 22YM MRT301N (ED/3ED)

1) Decoration changes:

21YM

22YM

1.1 Front
Fender (new
graphic design)



1.2 Rear
Fender (new
graphic
design)



1.3 Chassis
(new graphic
design), Left
view



1.4 Chassis
(new graphic
design),
Right view



1.5 New LED light /
Headlight cover
design. Optional
parts kit, same
carbon parts as
21YM. (3ED)





3.3) Description Specs. 22YM MRT301N (ED/3ED)

1) Decoration changes:

21YM

22YM

1.6 Wheel stripes (new graphic design. two stickers per wheel, total motorcycle 4 units)



1.7 Front suspension (new graphic design)



1.8 Top bridge/stem (black colour)



1.9 Fuel tank (black colour and new graphic design)





3.3) Description Specs. 22YM MRT301N (ED/3ED)

1) Decoration changes: **21YM**

22YM

1.10 Side stand (black colour) (ED)



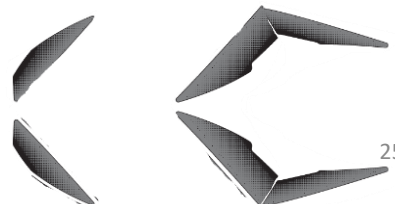
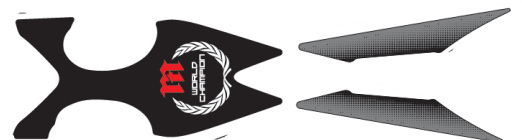
1.11 Gear lever (black colour) (ED)



1.12 Handlebar protector (grey colour) (ED)



1.13 Rear fender (Addition of new design elements)





3.3) Description Specs. 22YM MRT301N (ED/3ED)

1) Decoration changes:

21YM

22YM

1.14 New
Airbox
sticker
design



1.15 New
Exhaust
protector
sticker
design





3.3) Description Specs. 22YM MRT301N (ED/3ED)

2) Performance changes: **21YM**

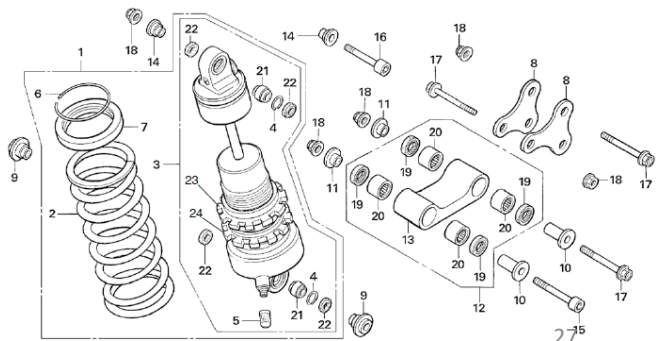
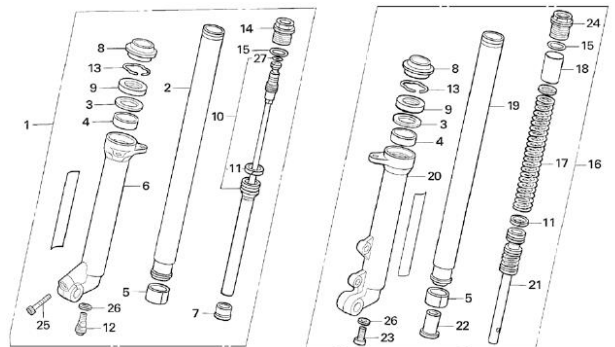
22YM

2.1 Front Suspension manufacturer change: from Tech (21YM) to SHOWA (22YM)



22YM Suspension specifications

Suspension Front	39mm SHOWA telescopic fork with pre-load, rebound and compression adjustment. 158mm stroke.
Suspension Rear	Pro-Link system with SHOWA shock with spring pre-load and rebound adjustment. 170mm stroke



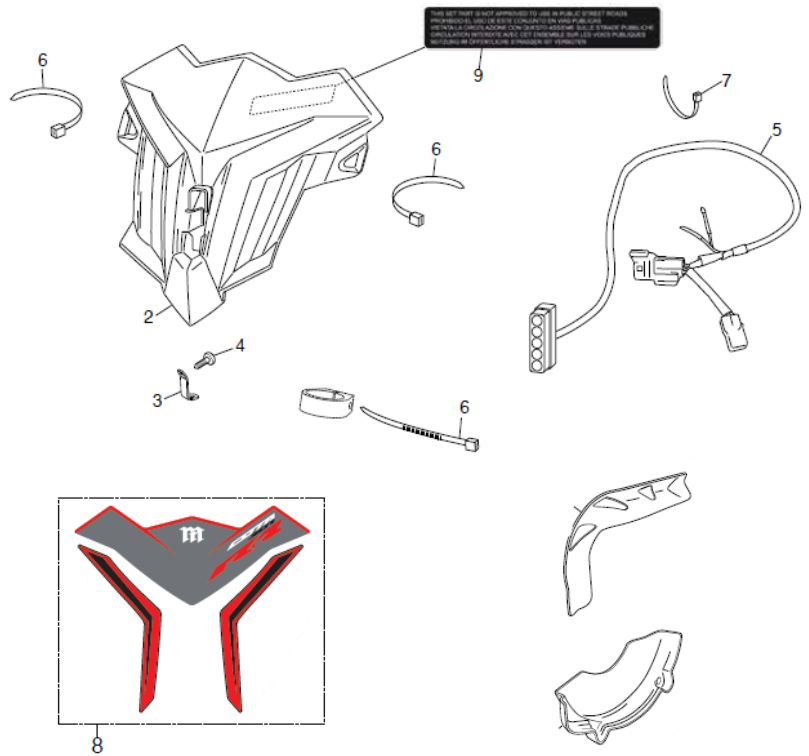


3.3) Description Specs. 22YM MRT301N (ED/3ED)

3) Optional Parts Kit:

3.1 Content optional parts kit.

22YM



(Pictures shows Optional Race Kit. This Race Kit is intended for competition use only. Must reinforce message "Customers to visit dealers for more information").



4) MONTESA COTA 4RT 301RR RACE REPLICA

- Introduction of a new Repsol race livery in **Ross White** colour (ref. NH196), easily recognizable by its fluor orange colour tones.



COTA
301RR
RACE REPLICA



4) MONTESA COTA 4RT 301RR RACE REPLICA

20YM



MRT300M (2ED/4ED)

22YM

UPGRADED VERSION



MRT301N (ED/3ED)

COTA
301RR

22YM

NEW VERSION



MRT301N (2ED/4ED)

COTA
301RR
RACE REPLICA



4.1) MRT301N (2ED) vs (4ED)

MRT301N (2ED)

*HOMOLOGATED VERSION



MRT301N (4ED)

*RACE VERSION. FOR COMPETITION USE ONLY. OPTIONAL PARTS KIT SHOWN.





4.2) INFO. MRT301N (2ED/4ED)

Montesa Cota 4RT 301RR Race Replica



COTA
301RR
RACE REPLICA

Description:

- Our **most race-focused trials motorcycle**. Always at the pinnacle of competition, and constantly evolving. The Cota 4RT 301RR Race Replica is the choice of the ultimate trial champion, **inspired in the World Championship winning motorcycle from Toni Bou** (28 x World Champion). We've taken the best and made it that little bit better by creating the 301RR Race Replica.

Main motorcycle features:

- New Repsol Race livery
- 300cc four-stroke Honda engine
- 39mm SHOWA telescopic fork with pre-load, rebound and compression adjustment.
- Pro-Link system with SHOWA shock with spring pre-load and rebound adjustment.

Engine	
Bore × Stroke (mm)	81.5 × 57.2 mm
Carburation	Electronic fuel injection PGM-FI
Compression Ratio	10.4 : 1
Engine Displacement (cc)	298cc
Engine Type	Single, 4-strokes, 4 valves, SOHC, liquid cooled
Starter	Kick starter
Throttle Bore	28mm
Oil Capacity (Litres)	Engine 0.6L, Transmission 0.57L
Wheels	
Brakes Front	185 x 3mm hydraulic disc with 4-piston caliper and sintered metal pads
Brakes Rear	150 x 3mm hydraulic disc with 2-piston caliper and sintered metal pads
Suspension Front	39mm SHOWA telescopic fork with pre-load, rebound and compression adjustment. 158mm stroke.
Suspension Rear	Pro-Link system with SHOWA shock with spring pre-load and rebound adjustment. 170mm stroke
Tyres Front	Front 2.75 - 21 (Michelin)
Tyres Rear	Rear 4.00 - R18 (Michelin)
Wheels Front	Aluminium rims/ wire spokes
Wheels Rear	Aluminium rims/ wire spokes
Dimensions and Weights	
Caster Angle	24.5°
Dimensions (L×W×H) (mm)	2020 x 840 x 1135 mm
Frame type	Diamond, aluminium twin spar
Ground Clearance (mm)	310mm
Kerb Weight (kg)	73kg
Seat Height (mm)	677mm
Trail (mm)	63mm
Wheelbase (mm)	1,320mm
Transmission	
Clutch	Wet, multiplate with coil springs
Clutch Operation	Hydraulic
Final Drive	Roller chain
Gearbox	5-speed
Transmission Type	Manual
Instruments and Electrics	
Ignition System	Electronic, digital transistor



4.3) Description Specs. 22YM MRT301N (2ED/4ED)

1) Decoration
description:

22YM

1.1 Front Fender
(new graphic
design)



1.2 Rear Fender
(new graphic
design)



1.3 Frame black
colour, anodized
finish, (new graphic
design)

Left

Right



1.4 LED light/
Headlight cover
(White with
Repsol design).
Optional parts kit,
same carbon
parts as 21YM
MRT300L. (4ED)





4.3) Description Specs. 22YM MRT301N (2ED/4ED)

1) Decoration
description:

22YM

1.5 Wheels
(stripes in Repsol
design)

Rear



Front



1.7 Front
suspension (new
graphic design)



1.8 Top bridge/stem
(black colour)



1.9 Fuel tank (black
colour and new
graphic design)





4.3) Description Specs. 22YM MRT301N (2ED/4ED)

1) Decoration
description:

22YM

1.10 Filter box &
exhaust sticker
(new graphic
design –
predominant red
colour)



1.11 Rear sprocket,
black finish (no
sticker included)



1.12 Front and rear
aluminium
mechanized
aluminium wheel-
hub (black finish
and "RR" logo)



Rear



Front

1.13 Front and rear
disc protector



Front



Rear



4.3) Description Specs. 22YM MRT301N (2ED/4ED)

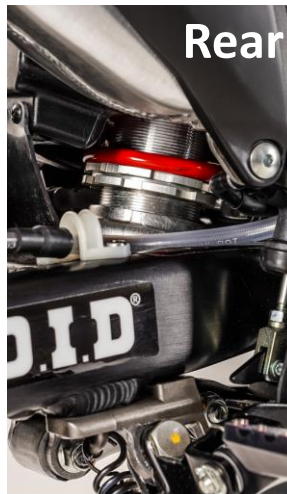
2) Performance description:

22YM

2.1 Rear disk brake
FIM approved

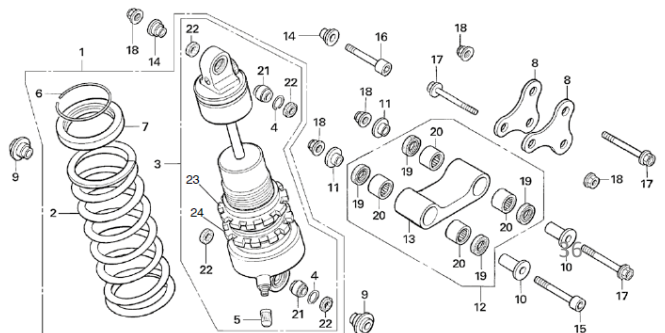
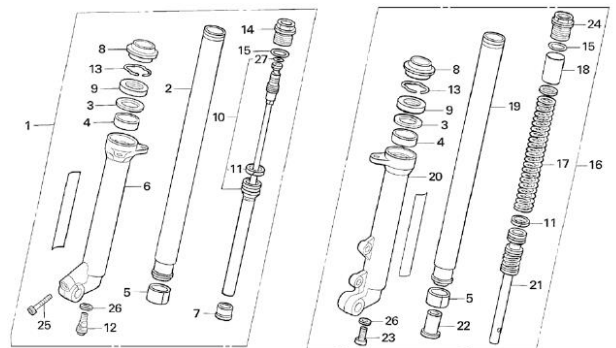


2.2 Front & rear
SHOWA
suspensions



22YM Suspension specifications

Suspension Front	39mm SHOWA telescopic fork with pre-load, rebound and compression adjustment. 158mm stroke.
Suspension Rear	Pro-Link system with SHOWA shock with spring pre-load and rebound adjustment. 170mm stroke



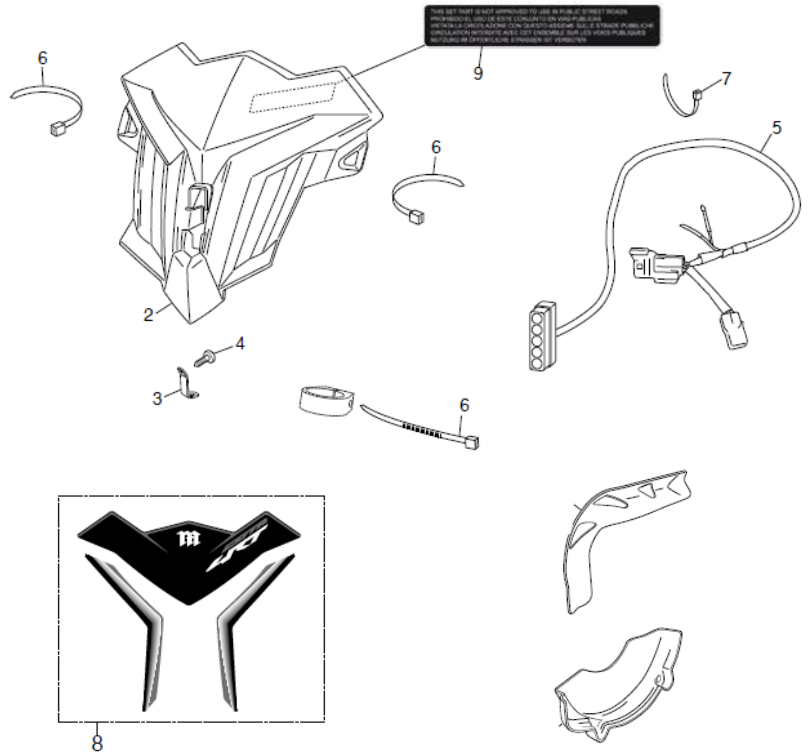


4.3) Description Specs. 22YM MRT301N (2ED/4ED)

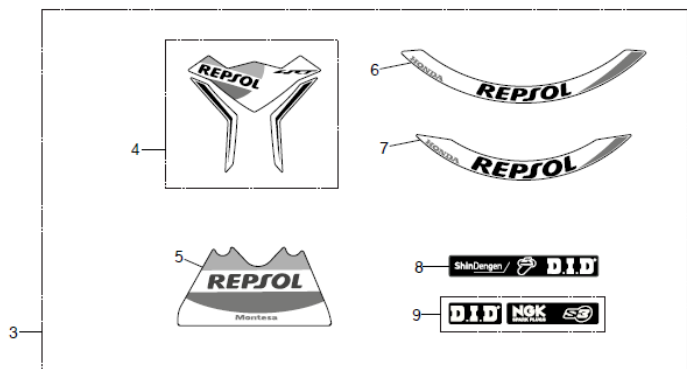
3) Optional Parts Kit:

3.1 Content optional parts kit.

22YM



*KIT REPSOL



(Pictures shows Optional Race Kit. This Race Kit is intended for competition use only. Must reinforce message "Customers to visit dealers for more information).



4.3) Description Specs. 22YM MRT301N (2ED/4ED)

3) Optional Parts Kit:

3.2 Content
KIT REPSOL
stickers, from
Optional
Parts Kit



22YM

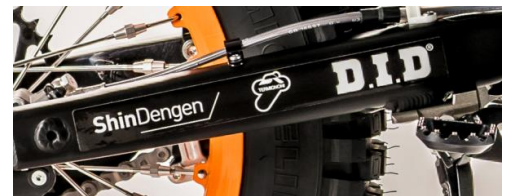


***NOTE**

20YM

22YM

3.2.1
Change in
sponsor
layout for
swingarm
stickers.
Addition of
Termignoni
sponsor.





5) 22YM MST260N (ED)

20YM



MST260L (ED)

22YM

EURO 5 COMPLIANT



MST260N (ED)



**** Available in Europe ONLY.**



5) 22YM MST260N (ED)

- Maintains its tri-colour graphic design in **Ross White** colour (ref. NH196). Now compliant with the latest Euro5 emissions regulations.



Yamaha



5.1) INFO. MST260N (ED)

Montesa Cota 4RIDE



Description:

- Montesa's interpretation of an off-road polyvalent motorcycle, whilst maintaining the characteristics and performance abilities of a trials Montesa motorcycle. With the incorporation of a seat that provides an upgrade in terms of comfort. Compliant with the latest Euro5 emissions regulations.

Main motorcycle features:

- 259cc four-stroke engine
- Twin-spar aluminum frame
- Showa rear 39mm shock
- Front TECH fork
- 4.3L fuel tank
- Euro5 compliant

Engine	
Bore × Stroke (mm)	78 × 54.2
Carburation	PGM FI electronic fuel injection
Compression Ratio	10,5 : 1
Engine Displacement (cc)	258.9 cm3
Engine Type	Single cylinder, 4 strokes, 4 valves, SOHC, liquid cooling
Starter	Kick
Throttle Bore	28 mm
Oil Capacity (Litres)	Engine: 0.6 litres, Transmission: 0.57 litres
Wheels	
Brakes Front	Hydraulic disc 185 x 3.5 mm with 4 piston monobloc caliper and sintered metal pads
Brakes Rear	Hydraulic disc 183 × 3.5 mm dual-piston caliper
Suspension Front	Telescopic fork TECH 39mm, adjustable in preload and extension. 190mm travel.
Suspension Rear	Pro-Link with damper R16V system, adjustable for pre-load, extension. 170mm travel
Tyres Front	80/100 21 (Dunlop)
Tyres Rear	120/100 R18 (Dunlop)
Wheels Front	21 × 1,60
Wheels Rear	18 × 2,15
Dimensions and Weights	
Caster Angle	23°
Dimensions (L×W×H) (mm)	2,035 x 835 x 1,160 mm
Frame type	Aluminium Twin Tube
Fuel Tank Capacity (Litres)	4.3 litres
Ground Clearance (mm)	325 mm
Seat Height (mm)	905 mm
Weight (kg)	82 kg
Wheelbase (mm)	1,335 mm
Transmission	
Clutch	Wet multiplate
Clutch Operation	Hydraulic
Final Drive	Chain
Gearbox	5 speed constant mesh



5.2) Description Specs. 22YM MST260N (ED)

1) Decoration description:

21YM

22YM

1.1 Maintains decoration



2) Emissions related changes:

21YM

22YM

2.1 System in place to comply with current regulations.

Euro 4 compliant

Euro 5 compliant

**New evaporative emissions values reached with implemented system.

See scheme below.

** Euro 5 tailpipe emissions entry into force delayed for trial/enduro motorcycles.

